

2019 CAPITALE national arts FESTIVAL

Treat

BY JAVA DANCE THEATRE

HARBOURSIDE FUNCTION CENTRE

For further information please contact:



Harriet Newman

Phone: 04 913 3742

capitalebookings@experiencewellington.org.nz

What is this pack for?

This information pack is to help prepare you for your visit.

Front of venue

Harbourside Function Centre (formerly known as Mac's Function Centre) is on Taranaki Street, along the Wellington Waterfront. It is a red brick building with a grey roof.



The front entrance of the function centre faces out onto Taranaki Street, across the road from Circa Theatre. Along the top of the building is a large sign that says, 'Shed 22 Wellington'. There is a flat cover above the entrance lit up by yellow light bulbs.



Inside

To enter the building, you will go through two sets of automatic sliding glass doors.

The first set of doors has the words 'Harbourside Function Venue' on it.



When these doors open, you will be in a small carpeted room facing another set of automatic doors. These doors have a grey stripe going across the glass.



Once you walk through both sets of doors, you will be in a big waiting area with wooden floors and walls. There will be a flight of stairs going up to your left and the doors to the theatre are directly in front of you.



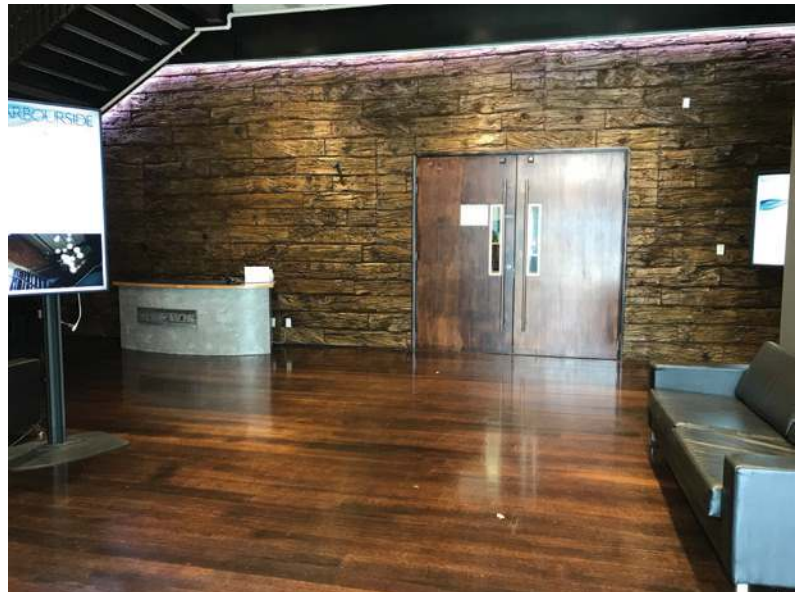
If you turn right while standing in this waiting room, you will see big silver elevator doors. You will also see two signs that say toilets.

These signs are pointing to the right and if you follow them, you can find three bathrooms including an accessible toilet.

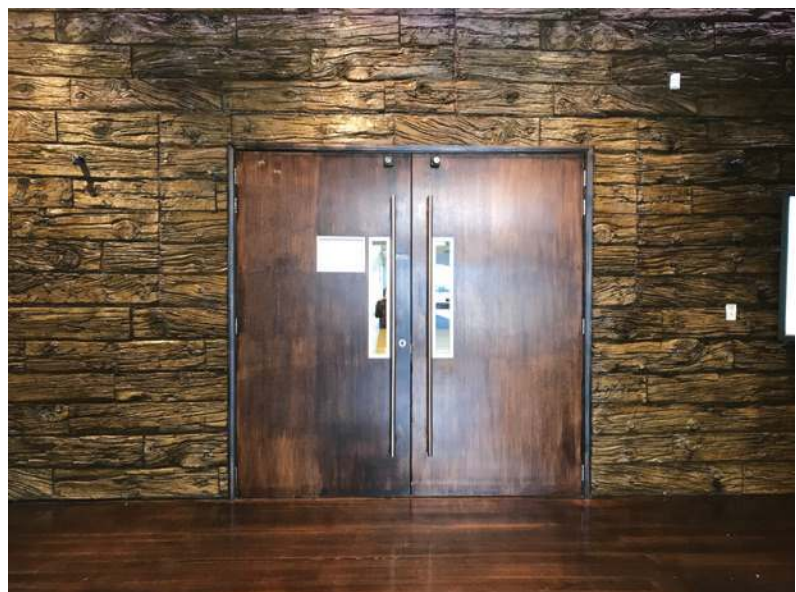


How to get to the theatre

Once inside the waiting area, the doors to the theatre are directly in front of you. They are large wooden doors with narrow windows going down the middle.



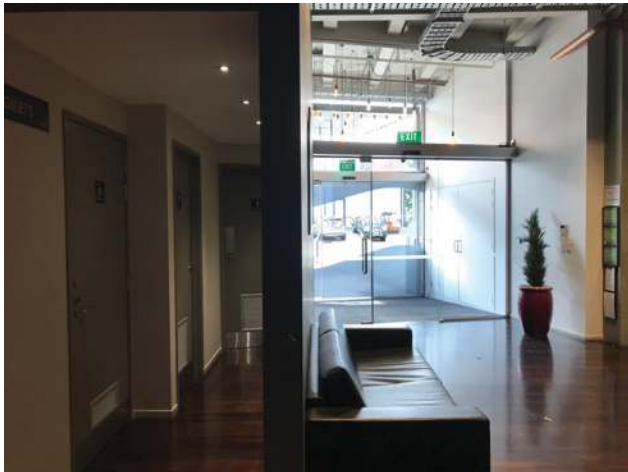
There are big metal door handles right in the middle of double doors. You pull these handles towards you to open the door into the theatre.



Where are the toilets?

When you come out of the theatre, you will see a small hallway to your left. There are three toilets down this hallway.

The first toilet on your left is the disabled toilets. The next one on the left are the male toilets. Directly ahead are the female toilets.



Inside the theatre

The theatre space is a large room with wooden floors. There will be a raised stage in the middle of the room, and you will be able to sit on either side of the stage. There will be black curtains over the windows of the room on the left hand side. The show will ignite your senses through smell and visual stimuli. There will be musicians playing instruments and lots of dancing!

There will be a big circle of chairs going around the outside of the room. This is where you will sit. The performers will be doing their show in the middle of the circle so make sure to listen to your guide when they tell you where to sit.



Show Details

Treat is an interactive show that involves live music and a lot of dancing! One of the performers, Charley, will be sitting in the circle with you and he will be playing music on his large cello as the other performers dance. This show is very musical so you'll be hearing lots of drumming, some musical shakers, in addition to the string instruments. It can get a bit loud at times so feel free to dance along in your seats! At times the dancers may clap to the beat of the music. You can clap along too!

When they are dancing, the performers will be moving all over the circle, using up all the space in the middle. At certain points, the dancers will be holding containers that make a noise when they shake them. They may even get close and shake the containers near you to help get you involved in the show!

The performers will be also working with actual food products so you can expect to smell a lot of delicious things. As they dance, the performers will get covered in pink and yellow powder that they will throw on themselves. They will also be using cocoa powder. This powder will be poured all over the ground as the actors dance, walk and play in it so things can get very messy as it covers their whole body! At a certain point, one of the dancers will start playing with gooey chocolate sauce from one of the food containers and maybe even have a wee taste! In the show, one of the actors will love chocolate so much, he pours chocolate sauce on himself and gets very sticky.

At times Treat is a fast-paced and energetic show so we have to make sure you give the team lots of space to do their dancing. Make sure to listen to your guide when they tell you where to sit so that you have a good view without getting too close to the mess!

When the show has finished, people may clap their hands. You can clap too if you liked the show! The lights will come back on and everyone will stand up and collect their things and will leave the theatre.

The Performers



Emma Coppersmith



Charley Davenport



Lauren Carr



Tristan Carter

Thanks for watching, we'll see you next time!