

2019 CAPITALE national arts FESTIVAL

GABEZ

BY YOSHIMOTO CREATIVE AGENCY

CIRCA THEATRE

For further information please contact:



Harriet Newman

Phone: 04 913 3742

capitalebookings@experiencewellington.org.nz

What is this pack for?

This information pack is to help prepare you for your visit.

Front of venue

Circa Theatre is situated on Taranaki Street. Its front entrance is accessed on the opposite side, facing the Te Papa forecourt. You'll be coming into the theatre through a large, white doorway which has the words 'Circa Theatre' written above it. There will be posters of other theatre shows on the front of the building and there may also be flags hanging on either side of the doorway with the Circa theatre logo.

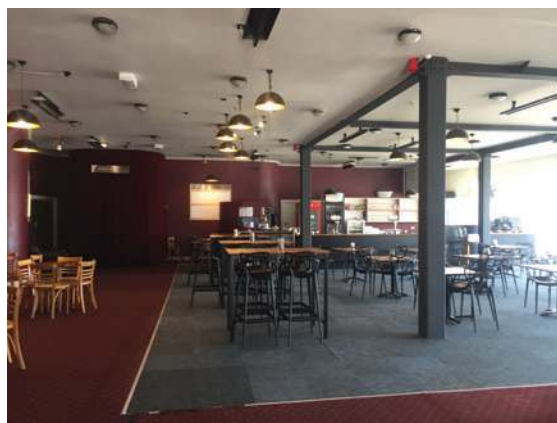


Inside

When you enter Circa you will be standing in the dining area of the Circa Theatre Café.

There are dining tables and chairs in this area and the food counter is at the back, directly ahead.

To your right is the Box Office/front desk of the theatre. On your left is the entrance to Circa One.



How to get to the theatre

Once inside, you will see red velvet curtains on your left with a large gold sign above saying Circa Theatre One.

Behind these curtains is the door way to the theatre. The curtains will be drawn once theatre is ready for you to take your seat.

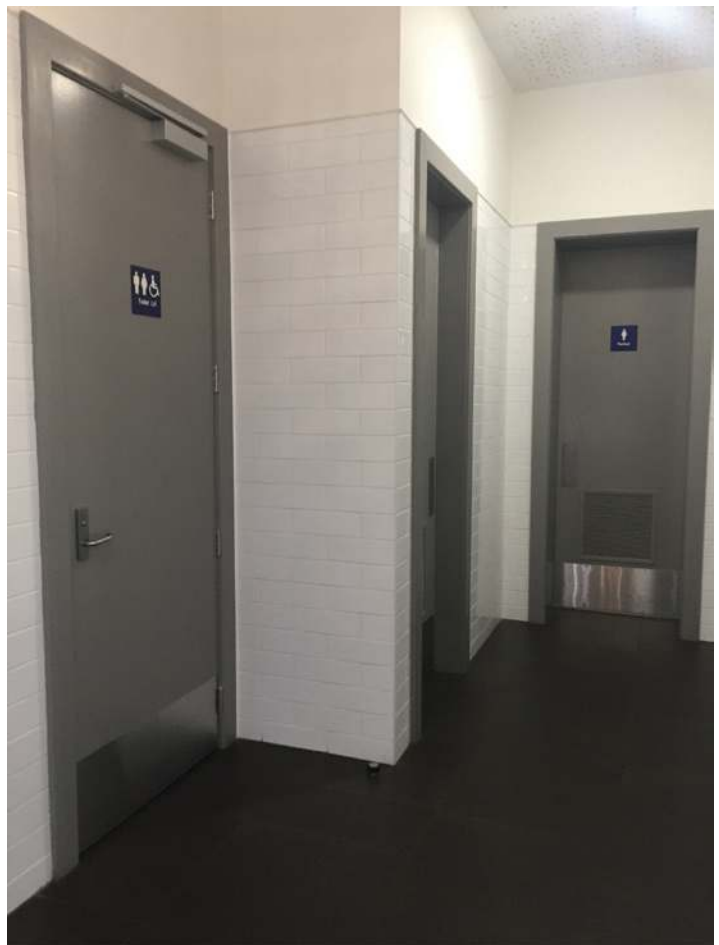


Where are the toilets?

The toilets are on the ground floor, right next to the entrance to Circa Theatre One. When you first enter Circa, you can get to the toilets by turning left. There, you will see a white doorway next to some pamphlet stands and leather couches.

This doorway will take you into a corridor with white brick walls, grey tile floors and a large chandelier on the ceiling.

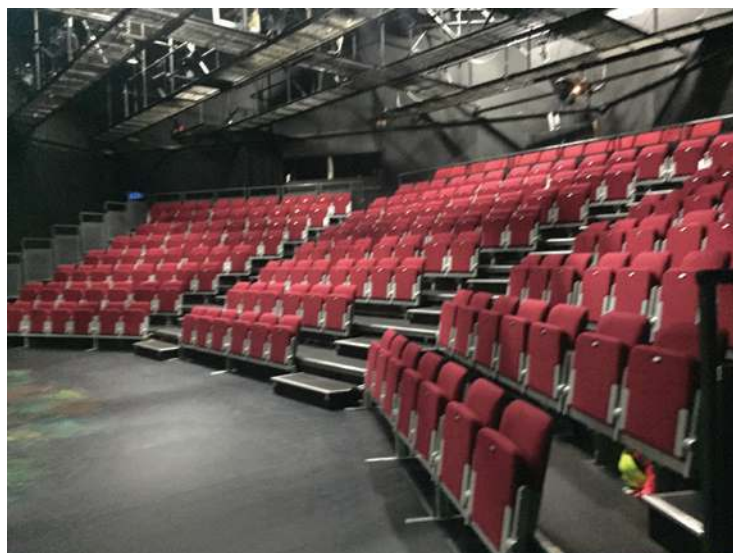
Here, you will find three restrooms. The door on your left is for both males and females and is wheelchair accessible. The next door on the left leads to the male toilets. The door directly ahead of you leads to the female toilets.



Inside the theatre

Once the team have drawn the red curtains and opened the door, your guide will take you into the Circa One theatre. You will come in along the side of the theatre and the stage will be set up right in front of the seats. This is where the actors will be performing!

There are rows of fold-down seats with stairs down either side and down the middle. When you arrive in the theatre the lights will be on so you can see where to go. Lots of other adults and children will also be coming in to see the show so make sure to pay attention to your guide when they tell you where you will be sitting!



Show Details

GABEZ is a silent comedy duo which means there won't be any dialogue throughout the performance. But that doesn't mean there won't be a lot of action! Masa and Hitoshi are street performers and will be showing you their dance moves during the show.

The duo will be dancing along to a track with loud and repetitive sounds. Masa and Hitoshi are playful with each other, so at times they will be clapping their hands together and making funny faces at each other and at the audience.

This show is full of dance and acrobatics so you will be seeing Masa and Hitoshi moving all over the stage quickly. They will be dancing, jumping and may even do impressive flips and cartwheels throughout the show. Don't worry if they look like they might fall down - they are well trained so they know what they are doing!

GABEZ is a fast-paced and energetic show so we have to make sure we give the duo lots of space to do their awesome moves. Make sure to listen to your guide when they tell you where to sit so that you have a good view without getting too close!

When the show has finished, people may clap their hands. You can clap too if you liked the show! The lights will come back on and everyone will stand up and collect their things and will leave the theatre.

The Performers



Hitoshi



Masa

Thanks for watching, we'll see you next time!